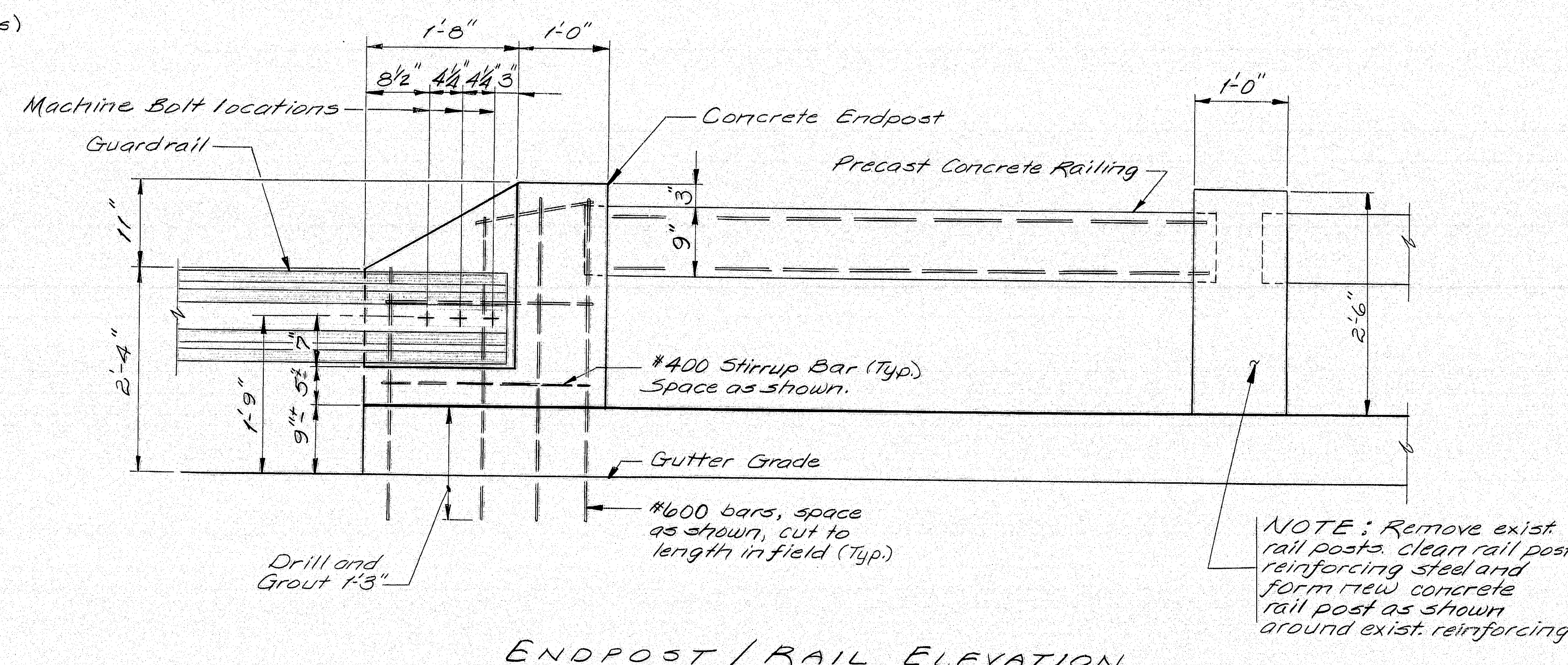
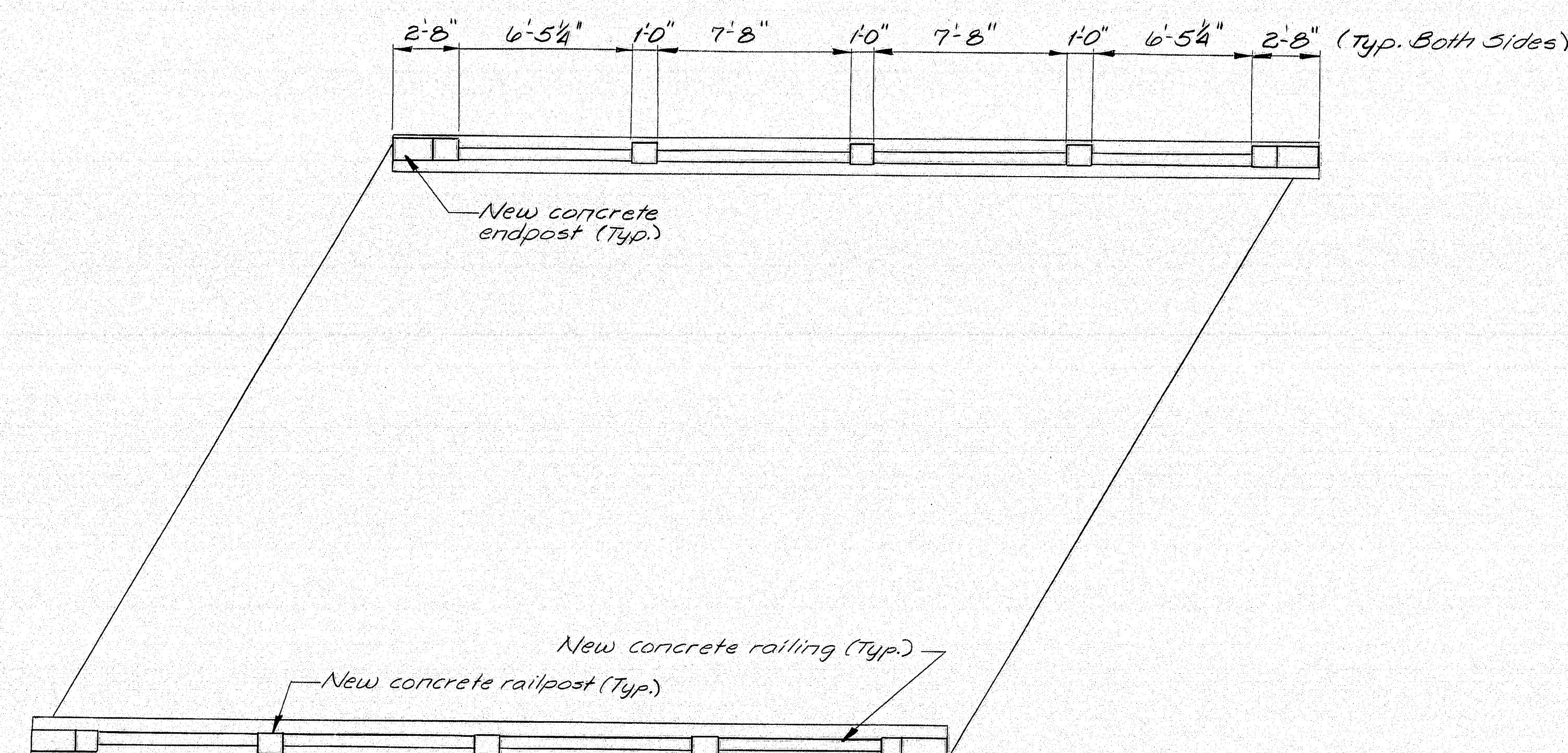


P.R.A. REQ. NO.	STATE	PROJECT NUMBER	SHEET NO.	TOTAL SHEETS
1	MAINE			



PROJECT DESIGN ENGINEER	BY	DATE
DESIGN - DETAILED	LSB	7-88
CHECKED		
REVISIONS		
FIELD CHANGES		

MARK	SIZE	No.	LENGTH	LOCATION
#400	#4	3	7'-0"	Endpost (Bend in field)
#600	#6	8	3'-7"	Endpost, Vertical
#601	#6	8	7'-0"	End Bar, (See Below)
#602	#6	8	8'-3"	Int. Bar, (See Below)
#603	#6	8	6'-8"	End Bar
#604	#6	8	7'-11"	Int. Bar

3'-3"	#601-5'9 1/2", #602-7'-0 1/2"	3'-3"
-------	-------------------------------	-------

GENERAL NOTES

1. Reinforcing steel shall have a min. 2" cover unless noted.
2. The existing reinforcing steel may be used at the new concrete endpost however it must be cleaned before the new concrete is placed.
3. Wire stirrups for rail bars shall be constructed in the field from a single strand of #9 annealed wire. When forming the stirrups make a complete turn around each reinforcing bar.
4. Wrap the tongue end of each rail bar with 2 layers of heavy roofing felt. Chamfer exposed edges of rail bar 1/2".

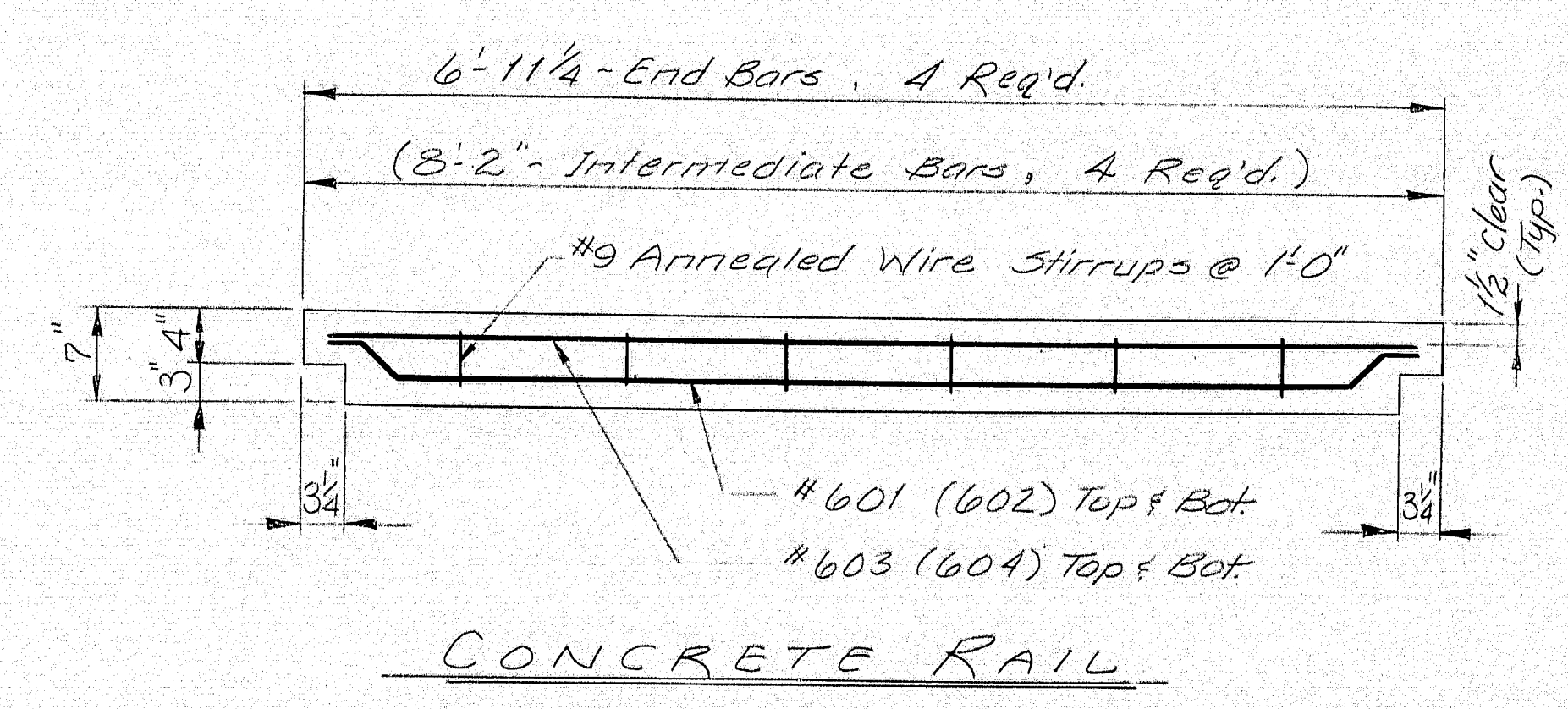
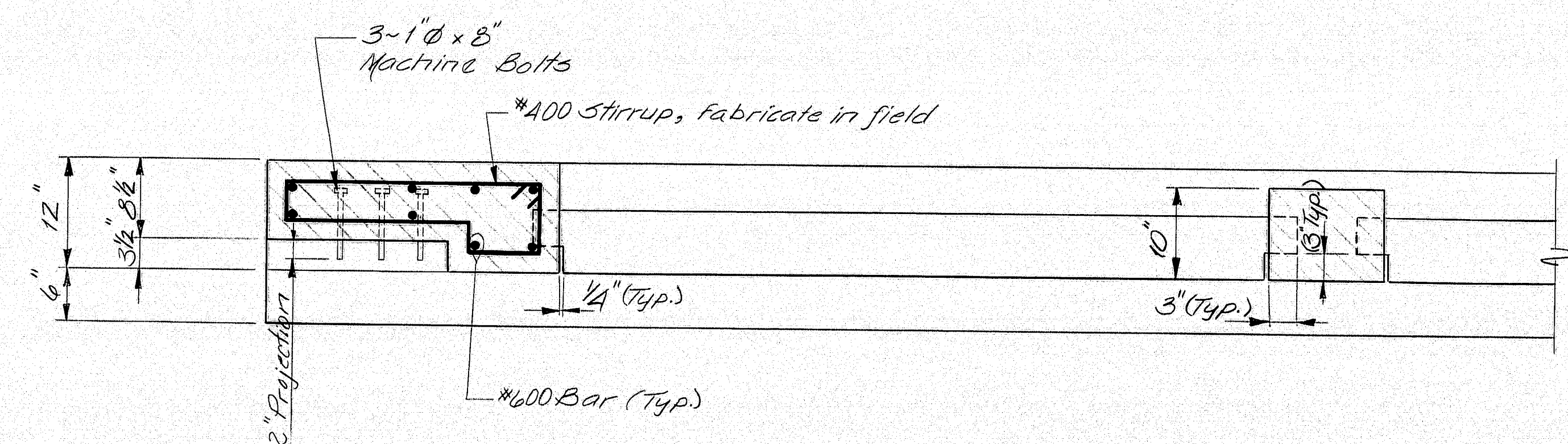
SCOPE OF WORK

Remove all existing railing and rail posts. Install new railing, rail posts and install concrete endposts.

MATERIALS

Reinforcing Steel = 416 lbs.
Concrete = 3 cu. yds.
Machine Bolts = 12 ea.

- NOTES
- 1 All dimensions are out to out of bar
 - 2 Bars shall be Grade 40 or 60



111-25

Bridge No. 3128

STATE OF MAINE
DEPARTMENT OF TRANSPORTATION
GREAT FARM BROOK BRIDGE
OVER
GREAT FARM BROOK
JACKSON, WALDO COUNTY
BRIDGE RAIL REPLACEMENT
SHEET 1 OF 1 AUGUSTA, MAINE Jan. 1988